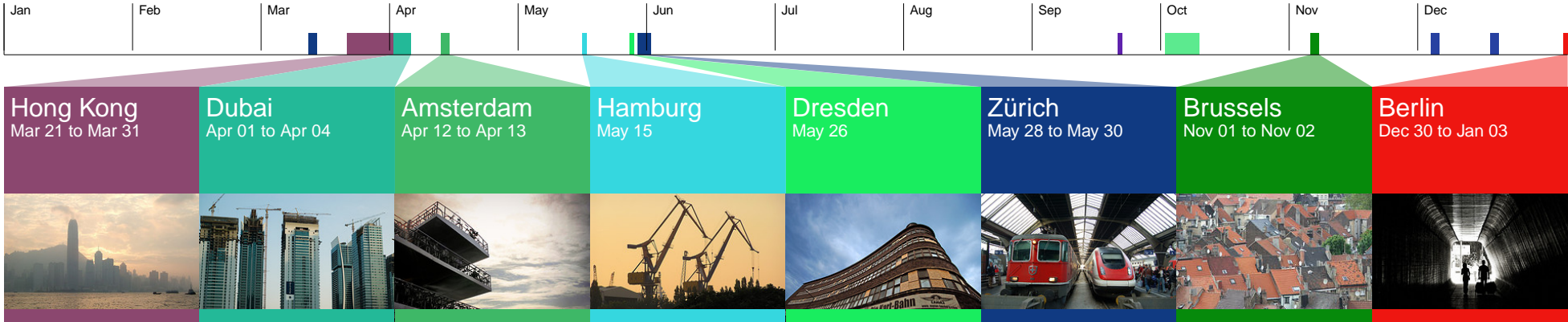


2008 Personal annual report for Chris Muench



You took 13 trips in 2008, which added up to 27,330 km or 7% of the distance to the moon.

In 2008, you spent

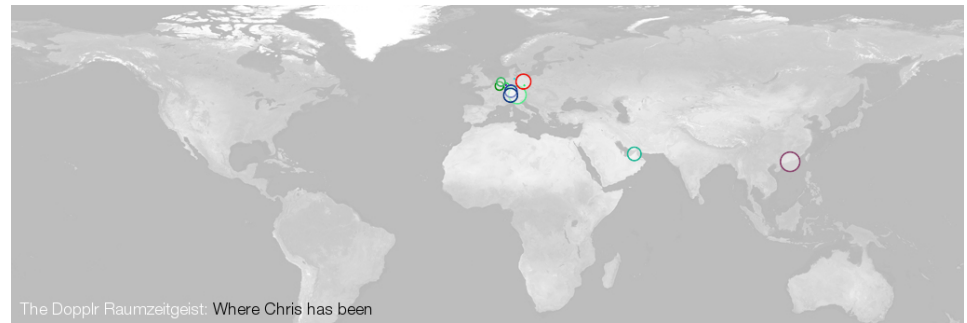


You have 9 travellers in your network. They travelled a total of 203,385 km in 2008, and everyone on Dopplr travelled a total of 1331.4 million km or 8.9 AU in 2008: the approximate distance to Saturn from the Earth as of January 2009.

Your personal velocity for 2008 was 3.12 km/h, which is about the same as NASA's crawler.

The 5 most popular cities in your network are Cologne, Berlin, Karlsruhe, Munich and Lisbon.

The furthest distance you travelled was to Hong Kong (9,237 km from Cologne), which is the 24th most popular city on Dopplr. The shortest distance you travelled was to Düsseldorf (34 km from Cologne), which is the 57th most popular city on Dopplr.



You spent the longest in Hong Kong, volume one has a tip: Many MTR stations have free internet terminals. Many are located just before the exit gantries. They are discernible by a huge "Fundsupermart.com" ad above them. See more on the city page for Hong Kong on Dopplr.

We couldn't calculate the carbon footprint of your travels for 2008 because at the moment, you're not using that feature. In 2008, the average carbon of those who are tracking the impact of their travels on Dopplr was 6,413 kg CO₂.

Go to <http://dplr.it/carbon> to get started.

In 2008, you mostly coincided with:

